



2702 East Flower Street, Phoenix, AZ 85016  
602.381.6000

[www.creightonschools.org](http://www.creightonschools.org)



*Adventurous Thinkers • Collaborative Learners • Kind Hearted Leaders*

Are YOU Ready to Make a Difference?

Dear Prospective Creighton Teacher,

The teacher who joins our Creighton family is a unique breed of teacher. Creighton teachers possess a passion for education, as well as compassion for their students, families and community. As a teacher you are already exceptional because you decided to dedicate your life to the future generation of our state and nation, the question is: are you prepared to work for a district that truly makes a difference in student lives?

Creighton Elementary School District is located in the heart of Phoenix. Established in 1884, we are incredibly proud of our rich heritage and deep ties to the state of Arizona. Creighton serves 5,400 students and has 9, K-8 schools. We are unique in our approach to education - we believe in Adventurous Learning. This means an environment that provides students with hands-on, innovative, creative, and relevant experiences.

If you are a motivated teacher who is not afraid to think outside of the box, we would love for you to join our team and help us work towards the goal of creating neighborhood schools who inspire adventurous thinkers, collaborative learners, and kind-hearted leaders.  
Sincerely,

Dr. Susan Lugo  
*Director of Human Resources*





## What Do You Need to Teach in Arizona?

Teachers need to be highly qualified and appropriately certified to work in the Creighton School District.

- Submit your application online: [www.creightonschools.org](http://www.creightonschools.org)
- Obtain an Arizona Teaching Certificate visit: [www.ade.state.az.us](http://www.ade.state.az.us) (Reciprocal, Provisional and Standard)
- Arizona Department of Safety Fingerprint Clearance Card: [http:// www.azdps.gov/](http://www.azdps.gov/)
- Provide official transcript showing a posted degree and date
- Proof of eligibility to work in the United States
- Proof of MMR immunization (Measles, Mumps, Rubella) If born after 1957

### Arizona Teaching Certificate

- Early Childhood Education, Birth - Age 8 or Grade 3
- Elementary Education, 1-8
- Secondary Education, 7-12
- Specialized Secondary Certificate STEM 7-12
- Arts Education, PreK - 12
- Athletic Coaching, 7-12
- Teaching Intern

### Arizona Reciprocal Teaching Certificate

- Provisional Elementary Education, 1-8
- Provisional Secondary Education, 7-12
- Provisional Early Childhood Education, Birth - Age 8 or Grade 3
- Provisional Arts Education, PreK-12
- Provisional Special Education Certificates

visit [www.ade.gov](http://www.ade.gov) for full details on Arizona teaching certificate requirements



## Benefits to working at Creighton

- New teacher mentoring program
- Five paid days of orientation before school starts for all new teachers
- Twelve sick days allocated per year
- Two professional days per year
- Health, dental, and vision insurance for employees and family coverage options
- Life insurance coverage equal to an employee's base salary
- Disability insurance
- \$1,000 paid by the district towards a teachers National Board Certification
- Retirement plan
- Leave of absence and sabbatical leave for professional study
- Most importantly, being a valued member of the Creighton Family!



## Technology for Teachers

For many years Creighton School District has been a leader in providing current technology for both teachers and students to support instruction and learning.

All teachers are provided with a laptop, digital projector, document camera, Apple TV and iPad for use in the classroom. Other technologies are available depending upon the school or assignment.

Students K-8 are provided an iPad in the classroom.

Creighton's iAchieve Project supports the integration of Flipped Learning through the use of iPads in several classrooms. Flipped classrooms have a class set of iPads that can be used by students throughout the school day. iPads are also taken home for students to access initial instruction via teacher-created videos.

Professional development is provided to all staff receiving any equipment, and ongoing, embedded support in the classroom is always available. Professional learning communities for special groups such as technology-enriched Flipped Classrooms meet monthly.

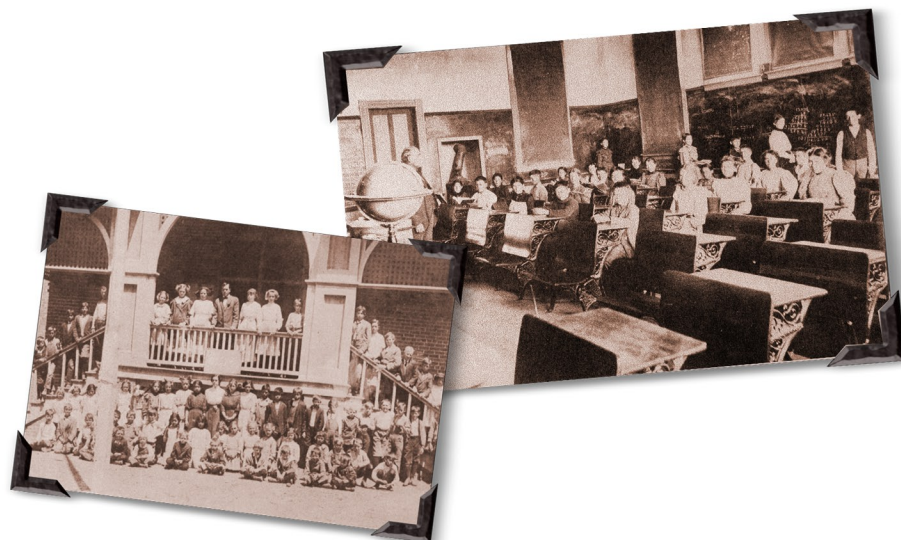


## Become Part of the Creighton School District History

The Creighton Elementary School District was established on April 10, 1884. Originally referred to as the East Phoenix School District No. 14 of Maricopa County. The one-room school house had one teacher and was open for two and a half months each year. The cost of the original structure was \$562.39. In 1891, a fire partially destroyed the school house. Bond money was raised, and a new school was built in 1895 at a cost of \$4,500. In 1897, the name was changed to Creighton School District (No. 14 of Maricopa County) in honor of Hugh Creighton, then a school trustee, for his donation of property on McDowell Road.

Six more schools were built in the Creighton Elementary School District after the end of the second World War: William T. Machan School in 1945, Monte Vista School in 1948, Loma Linda School in 1949, Larry C. Kennedy School (formerly Lafayette School) in 1950, Papago School in 1953, and Biltmore Preparatory Academy (formerly Squaw Peak). Over forty years lapsed before an eighth campus, Gateway School, opened its doors in the fall of 1998. The district's newest campus and ninth school is named Excelencia, which opened in the Spring of 2001.

As Creighton Elementary School District continues to grow, our commitment to serving our students and our community also continues to grow. We are proud of the achievements of our faculty, staff, administration, and most especially, of our students.





# Creighton Signature Programs

Creighton School District is home to nine schools all hosting a different signature program. Programs offered at each school include:



## **The Creighton Academy:**

Spanish Dual Language, Multi-age, Constructivist

The newly reimagined Creighton Academy celebrates Student Centered Learning through a Spanish Dual-Language, Multi-age, Project-Based environment. The brand new campus boasts open floor plans, collaborative and small group spaces, and is considered a smart school with access to the latest Apple products.

2802 E. McDowell Rd., Phoenix, AZ 85008

Grades: K-6

Front Office: (602) 381-6060



## **Biltmore Preparatory Academy**

Spanish Dual Language

Biltmore is home to an internationally recognized Dual Language Spanish Immersion program. In this curriculum students spend half of the day speaking English and the other half speaking Spanish. The Dual Language enrichment model challenges all students to become fluent in two languages and it creates a school community focused on cultural competency.

4601 N. 34th Street, Phoenix, AZ 85018

Grades: K - 8

Front Office: (602) 381-6160



## **Excelencia School**

Excelencia is cultivating a generation of students committed to creating positive change within their communities. Excelencia's service learning focus is an approach to teaching and learning in which students apply academic knowledge and skills to improving lives and conditions in the real world using Project-Based learning.

2181 E. McDowell Rd., Phoenix, AZ 85006

Grades: K-8

Front Office: (602) 381-4670



## **Gateway School:**

Students are preparing to be leaders at Gateway School. Through academic opportunities, camps, and sports, students are encouraged and inspired to take on leadership roles among their peers. Gateway is the recipient of the 21st Century After School Grant, which allows the school to provide free after school enrichment classes to students.

1100 N. 35th Street, Phoenix, AZ 85008

Grades: K-8

Front Office: (602) 381-4665



### **Kennedy at Loma Linda:**

Kennedy at Loma Linda School is providing students and families with academic opportunities, leadership development and mindfulness techniques. Kennedy at Loma Linda is a neighborhood school known for its connection to the community and strong partnerships with families and local businesses.

2002 E. Clarendon Ave., Phoenix, AZ 85016

Grades: K-8

Front Office: (602)381-6080



### **Machan School**

Machan school is nestled in the Green Gables community and serves kindergarten through eighth grade students. Their project-based learning curriculum teaches students to identify and explore real-world problems and develop solutions.

The Machan neighborhood school boasts a tight knit community feel with deep relationships created between families and staff.

2140 E. Virginia Ave., Phoenix, AZ 85006

Grades: K-8

Front Office: (602)381-6120



### **Monte Vista School**

#### **Arts Integration School**

Monte Vista integrates the arts into daily classroom experiences. The arts are part of classroom instruction in all content areas. These strategies provide students an opportunity to create, make connections to content, and demonstrate their understanding through many forms of art such as drama, music, visual art, or movement. Middle school students have access to learn about the arts through electives such as Improv and Acting, Perspective Drawing, Guitar, Band, Theater for Change, Graphic Design, Portraiture, Dance, and Choir.

3501 E. Osborn Rd., Phoenix, AZ 85018

Grades: K-8

Front Office: (602)381-6140



### **Papago School**

#### **Coding and Robotics**

Computer coding and robotics is a primary focus at Papago. Students from all grade levels participate in the coding curriculum and are provided access to NAO robotics, Lego League Robotics and have opportunities to attend ASU sponsored camps and competitions. Papago is committed to preparing children for a future of computer-based careers and to set them on a computer science pathway.

2013 N. 36th Street, Phoenix, AZ 85008

Grades: K-8

Front Office: (602)381-6100

# Creighton Signature Programs

Creighton School District is home to nine schools all hosting a different signature program. Programs offered at each school include:



## **The Creighton Academy:**

Spanish Dual Language, Multi-age, Constructivist

The newly reimagined Creighton Academy celebrates Student Centered Learning through a Spanish Dual-Language, Multi-age, Project-Based environment. The brand new campus boasts open floor plans, collaborative and small group spaces, and is considered a smart school with access to the latest Apple products.

2802 E. McDowell Rd., Phoenix, AZ 85008

Grades: K-6

Front Office: (602) 381-6060



## **Biltmore Preparatory Academy**

Spanish Dual Language

Biltmore is home to an internationally recognized Dual Language Spanish Immersion program. In this curriculum students spend half of the day speaking English and the other half speaking Spanish. The Dual Language enrichment model challenges all students to become fluent in two languages and it creates a school community focused on cultural competency.

4601 N. 34th Street, Phoenix, AZ 85018

Grades: K - 8

Front Office: (602) 381-6160



## **Excelencia School**

Excelencia is cultivating a generation of students committed to creating positive change within their communities. Excelencia's service learning focus is an approach to teaching and learning in which students apply academic knowledge and skills to improving lives and conditions in the real world using Project-Based learning.

2181 E. McDowell Rd., Phoenix, AZ 85006

Grades: K-8

Front Office: (602) 381-4670



## **Gateway School:**

Students are preparing to be leaders at Gateway School. Through academic opportunities, camps, and sports, students are encouraged and inspired to take on leadership roles among their peers. Gateway is the recipient of the 21st Century After School Grant, which allows the school to provide free after school enrichment classes to students.

1100 N. 35th Street, Phoenix, AZ 85008

Grades: K-8

Front Office: (602) 381-4665



# THE Creighton ACADEMY

## EDUCATION REIMAGINED

At The Creighton Academy we are trailblazers who create leaders that take an active, responsible role in society.

We do this with a constant and continuous process of co-construction of a **multiage, dual language, project based, open learning environment** where students learn to take ownership of their learning and advocate for a brighter future.



## MULTIAGE

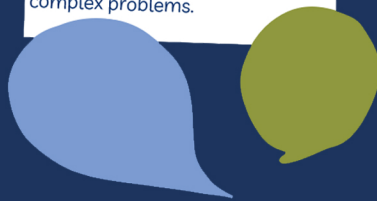
Our students are **intentionally blended into groups of children of different ages**. We believe there is more to our kids than dividing them by their birthdays. Sometimes they are divided by their interests, sometimes it's academic levels and sometimes we all stay together to learn from one another

Kids learn in 2 teacher Coveys and here is a K-1 group, a 2-3 group and a 4-6 group.



## PROJECT BASED

We use a dynamic approach in which students actively **explore real-world problems and challenges** and acquire both deep knowledge and expertise, where student voice is key and they take responsibility for their learning and develop solutions for complex problems.



## DUAL LANGUAGE

We use a Spanish immersion model where students have dedicated time in their day for a variety of methods of learning Spanish for approximately 50% of their day.

- **Targeted Spanish Support**-direct instruction in Spanish basics from vocabulary to verb conjugation
- **Math Instruction in Spanish**-All Math classes are taught only in Spanish using an immersion model.
- **Continuous Model**- During PBL Time students will do one day in English and then continue the instruction the next day in Spanish

50%

## OPEN LEARNING ENVIRONMENT

Our school is unique in the fact that there are no solid doors or windows in any of our learning environments. As students learn about the Levels of Autonomy they are given more freedom over the **place, pace and process** in which they learn.



FOR MORE INFORMATION OR  
TO SIGN UP FOR A TOUR

THE CREIGHTON ACADEMY  
2802 East McDowell Road  
Phoenix, AZ 85008  
(602) 381-6060





## VISION, BELIEFS & GOALS

The **VISION** for Creighton neighborhood schools is to inspire Adventurous Thinkers, Collaborative Learners, and Kind Hearted Leaders.

### WE BELIEVE IN

- ▶ Loving each child as our own.
- ▶ Mindful, curious, and adventurous learning.
- ▶ Safe schools that nurture mind, body and spirit.
- ▶ High expectations that promote academic growth.
- ▶ The strength that comes from the diversity of our community.

### OUR GOALS

- ▶ Adventurous Learning: Provide innovative, creative, and relevant learning experiences.
- ▶ Health and Wellness: Ensure safety and inspire health and wellness in our schools and community.
- ▶ Community Impact: Promote the value of the Creighton community and the unique contribution of each neighborhood school.
- ▶ Communication: Cultivate a sense of belonging and influence with our communities through the open exchange of ideas and information.
- ▶ Stewardship: Maximize and invest resources to achieve the strategic plan.



## Take the First Step and Apply

Simply go to our website:

<http://www.creightonschools.org/>

Hover on the Departments link, and scroll down to Human Resources. There you will see links for the following items:

- Employment Application
- Compensation Schedules
- Insurance and Benefits
- Monthly Insurance Rates
- ADE Certification and Renewal
- Human Resources FAQs
- Substitute Information
- Staff

You can check for specific openings in which you are interested by looking at the links on the left of the page. You will need to have a list of the jobs for which you are applying to include on your application.

To start your application, click on Employment Application. Please make sure you complete all information, and attach a copy of your certificate and fingerprint clearance card, along with letters and transcripts.

That's it!





Adventurous Thinkers • Collaborative Learners • Kind Hearted Leaders

### Governing Board

Lindsey McCaleb, *President*  
 Sophia Carrillo Dahl, *Clerk*  
 Heather Ayres, *Member*  
 Angel Campos, *Member*  
 Amy McSheffrey, *Member*

### District Executive Team

Dr. Donna W. Lewis  
*Superintendent*

Dr. Eric Dueppen  
*Interim Chief Academic Officer*

Jay Mann  
*Chief of Business Operations & Development*

Dr. Susan Lugo  
*Executive Director of Human Resources*



### The Creighton Academy

2802 E McDowell Road  
 Phoenix, AZ 85008  
 602.381.6060

### Biltmore Preparatory Academy

4601 N 34th Street  
 Phoenix, AZ 85018  
 602.381.6160

### Excelencia School

2181 E McDowell Road  
 Phoenix, AZ 85006  
 602.381.4670

### Gateway School

1100 N 35th Street  
 Phoenix, AZ 85008  
 602.381.4665

### Kennedy @ Loma Linda School

2002 E Clarendon Avenue  
 Phoenix, AZ 85016  
 602.381.6080

### Machan School

2140 E Virginia Avenue  
 Phoenix, AZ 85006  
 602.381.6120

### Monte Vista School

3501 E Osborn Road  
 Phoenix, AZ 85018  
 602.381.6140

### Papago School

2013 N 36th Street  
 Phoenix, AZ 85008  
 602.381.6100

**Community Education** • Excelencia School South Building entrance by 22nd Street and Willetta Street, Phoenix, AZ 85006 • 602.381.6132

**Family Resource Center** • 2052 N 36th Street, Phoenix, AZ 85008 • 602.381.4605